

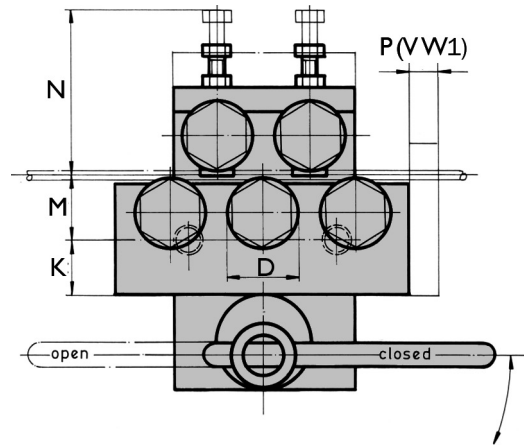
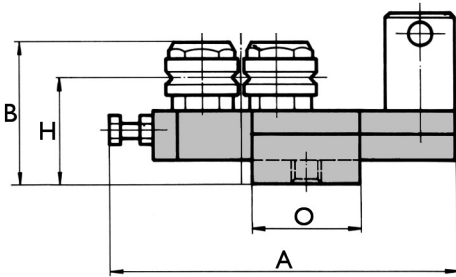
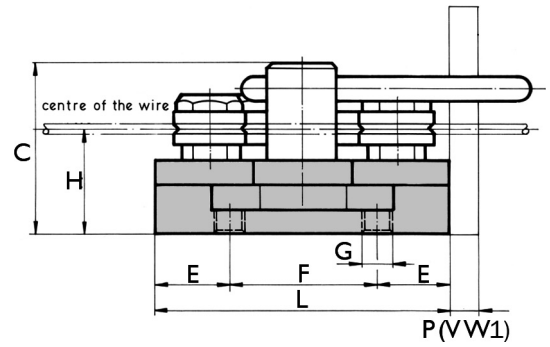
Techna STRAIGHTENERS (WIRE & STRIP)

ER - Straightener with Quick Release

For general applications and quick setup.



ER5 - Five Roll Unit



ER Series	Wire Diameter Ranges (mm) ϕ									
	≤ 0.3	0.3 - 0.5	0.5 - 0.8	0.8 - 1.5	1.5 - 3.0	3.0 - 5.0	5.0 - 7.0	7.0 - 9.0	9.0 - 11.0	11.0 - 15.0
Common Measurements										
A	66*	100**	100	156	161	204	204	209	312	312
B	26	39	39	46.5	56	65	69	69	102	106
C	37	53	53	70	70	84	84	84	130	130
D	10	13	17	23	31	40	45	52	72	80
E	10	10	17	27.5	33	40	50	50	40	40
G	M5	M6	M6	M10	M12	M12	M12	M12	M16	M16
H	22	32	32	37	43	49	52	52	78	82
K	12.5	20	20	22.5	22.5	30	30	35	40	40
M	1.5	2	3.5	27	27	24	23.5	26	42.5	44.5
N	32	48.5	47	61.5	66.5	90	93.5	96.5	160	158
O	25	40	40	45	45	60	60	70	80	80
P(VW1)	8	10	10	12	12	12	25	25	20	20
Rolls	WR10	WR13	WR17	WR23	WR31	WR40	WR45	WR52	WR72	WR80
5 Roll	ER5-0.3	ER5-0.5	ER5-0.8	ER5-1.5	ER5-3.0	ER5-5.0	ER5-7.0	ER5-9.0	ER5-11.0	ER5-15.0
F	20	30	46	42	52	70	90	90	180	180
L	40	50	80	97	118	150	190	190	260	260
Kg	0.2	0.6	0.9	1.9	2.6	4.9	6.3	7.2	20	20
7 Roll	ER7-0.3	ER7-0.5	ER7-0.8	ER7-1.5	ER7-3.0	ER7-5.0	ER7-7.0	ER7-9.0	ER7-11.0	ER7-15.0
F	33	48	68	70	90	120	168	168	270	270
L	53	68	102	125	156	200	268	268	350	350
Kg	0.2	0.8	1.1	2.5	3.5	6.7	9.2	10.4	29	29
9 Roll	ER9-0.3	ER9-0.5	ER9-0.8	ER9-1.5	ER9-3.0	ER9-5.0	ER9-7.0	ER9-9.0	ER9-11.0	ER9-15.0
F	46	66	90	98	128	170	246	246	360	360
L	66	86	124	153	194	250	346	346	440	440
Kg	0.3	1	1.4	3.1	4.4	8.5	12	13.5	34	34
11 Roll	ER11-0.3	ER11-0.5	ER11-0.8	ER11-1.5	ER11-3.0	ER11-5.0	ER11-7.0	ER11-9.0	ER11-11.0	ER11-15.0
F	59	84	112	126	166	220	324	324	-	-
L	79	104	146	181	232	300	424	424	-	-
Kg	0.4	1.2	1.6	3.7	5.3	10.2	15	16.7	-	-
13 Roll	ER13-0.3	ER13-0.5	ER13-0.8	ER13-1.5	ER13-3.0	ER13-5.0	ER13-7.0	ER13-9.0	ER13-11.0	ER13-15.0
F	72	102	134	154	204	270	-	-	-	-
L	92	122	168	209	270	350	-	-	-	-
Kg	0.4	1.3	1.9	4.2	6.2	12	-	-	-	-

* for ER5-0.3 A = 59.5

** for ER5-0.5 A = 94.5